



Maplefields Academy

A Specialist Social, Emotional & Mental Health Academy

New Parents/Carers Joining Our School



Welcome!

This booklet has been created to provide you with information to help your child settle quickly into School and help to enable us to work together for your child's progress

Thank you for taking the time to read it

Please keep it to refer to and do ask if you have any questions



Maplefields School

A message from the Headteacher

Dear Parents and Carers,

May I take this opportunity to assure you that I will work to the best of my ability to give every student here the best chances to succeed. Those of you who know me well will expect me to carry out my role with determination and dedication

The wellbeing of students is our top priority and I ask for your support in encouraging the core values of the school- caring, honesty, fairness & respect, perseverance, acceptance and the celebration of diversity

Whether starting new at Maplefields or returning for another year, I hope your child will develop their character, skills and talents supported by our dedicated staff

*Headteacher
Miss Jessie Walker*

Curriculum Intent

We strive to motivate students who have so far found school a challenge by providing a safe, calm, caring learning environment which is stimulating through the richness of the learning environment and the caring, nurturing approach and encouragement given to each student by staff. We work to foster a sense of belonging and to provide the opportunity for all students to develop a sense of **self-worth**, confidence and control over their lives

Our main aims are:

To provide opportunities for all students to follow a broad, balanced and relevant curriculum, which includes the National Curriculum, and to encourage each student to succeed and achieve their full potential with accreditation, whilst learning to establish **independence** through working routines, managing their own behaviour and learning to make appropriate choices and accepting responsibility

To prioritise Basic Skills giving special emphasis to literacy. Our students generally arrive with poor literacy skills and we aim to improve their attainments and achievement in reading and writing using a variety of strategies, resources and learning styles

To provide, in addition, direct timetabled opportunities for students to learn social, behavioural and **communication** skills and self-awareness through structured teaching

To help students develop a respect for themselves and others in order to be able to follow rules and become integrated and accepted members of the larger community who are able to form positive, meaningful and **healthy relationships**

To promote effective and supportive relationships with parents, carers and all other professionals involved with the students in working towards our agreed aims and values. The school promotes the spiritual, moral, social and cultural development of all students together with equal opportunities to enable students to achieve the individual outcomes ensuring their safeguarding as our priority

Maplefields Key Curriculum Drivers

Our Curriculum Drivers in support of trips at Maplefields are:

Communication, Healthy Relationships, Independence and a Positive Self-Worth



The School Day

Primary
8.45am - 3pm

Secondary
8.45am - 3pm

Attendance and Punctuality

Primary students should arrive at school at 8:45am

Secondary students should arrive at school by 8.45am

School should be called by 8:30am if your child will be absent or late

- We aim for 100% attendance
- Holidays in term time are not allowed
- Children should come into school before or following medical appointments
- Please see our attendance policy on our school website

Health & Safety

We take student security very seriously

School gates are closed at 9am and our children are supervised at all times

Health Care Plans for children can be arranged as required and we liaise closely with Parents and carers regarding any allergies, illness and prescribed medicines from the Doctor

Maplefields has a behaviour policy for the school and all students will have an Individual Behaviour and Learning Plan to help support each student with their individual needs. Team Teach training for staff runs throughout the school so staff use practiced techniques to keep students safe should they become dysregulated

Communicating with Staff

The School Office is open from 8am - 4.30pm should you need to speak to a member of our Staff

There is a Home-School Agreement for Parent/Carers to understand how we can jointly support individual students

Each Primary student has a Home-School Diary for Parents and Teachers

Our Maplefields Staff

Some of Our Team...



Jessie Walker

Headteacher/Lead DSL



Dean Willis

Deputy Headteacher/DSL



Paul Lamb

Deputy Headteacher/DSL



Pamela Bell

Assistant Headteacher/
DSL



Rachel Clews

Assistant Headteacher/
Primary Outreach Lead



Carla Johnstone

Family Support Worker/DSL



Camilla Kerr

SENCO/Deputy DSL



Debbie Watt

HR Manager



Elaine Towing

Receptionist/
First Aid



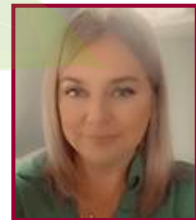
Kate Willis

Office Manager/
Exams Officer



Julie Weber

Office Manager/
Attendance Officer



Emma Warren

Administration Officer/
First Aid

Each Class has a Teacher and an average of 2 Teaching Assistants with 8 Students.

In line with National guidance, the School adopts a multidisciplinary approach in collaboration with a range of other professionals including:

- Therapists - Occupational, Speech, Music
- Psychologists - Educational Clinical
- Access to Nursing Service

Safeguarding

We take Safeguarding very seriously and it is our statutory requirement to do so
Please help us Safeguard your child by telling us about any bumps, bruises or cuts, do
not wait to us to call you

You should also expect us to tell you if something happens to your child at School

If something happens in your family that causes distress, please let us know,
we will respect all sensitive information

You can see our Child Protection Policy on our School Website

Designated Senior Leads for Child Protection

Designated Safeguarding Lead and Deputies for Safeguarding and Child Protection				
 <p>Jessie Walker Headteacher Lead DSL</p>	 <p>Dean Willis Deputy Headteacher Deputy DSL</p>	 <p>Paul Lamb Deputy Headteacher Deputy DSL</p>	 <p>Pamela Bell Assistant Headteacher Deputy DSL/SENCO</p>	<p>Online Safety Lead: James Briggs jbriggs@maplefields.northants.sch.uk</p> <p>Safeguarding Trustee/ Chair of Trustees: Howard Reid howar- dreid@maplefields.northants.sch.uk</p>
 <p>Carla Johnstone Family Support Worker Deputy DSL</p>	 <p>Camilla Kerr SENCO/ Deputy DSL</p>	<p>LADOConsultations@NCTrust.co.uk LOCAL AUTHORITY DESIGNATED OFFICER (LADO) Andrew Smith - 07850 854309 Sian Edwards 07738 636449 Francesca Hamilton 07443 348415 Channel helpline: 0207 340 7264</p>		<p>For Whistleblowing and Low level concerns please refer to the Headteacher: Jessie Walker</p> <p>In the case of an issue being in relation to the Headteacher please refer to Chair of Trustees: Howard Reid</p>

Top Tips for a smoother start at Maplefields

The following things may be helpful to ensure a great start at Maplefields:

- Before starting take your child to visit the area around Maplefields
- Take a few photographs outside the school
- Look at the Maplefields website and pictures and view the virtual tour
- Show your child their school uniform / sweatshirt

School staff will liaise with you to create a transition plan for starting at Maplefields
which suits individual needs

School Uniform

Primary School uniform consists of:

- Green Maplefields Sweatshirt
- Green Maplefields Polo Shirt
- White T-shirt/Shirt
- Black Trousers/Skirt
- Black School Shoes



Secondary School uniform consists of:

- Burgundy Maplefields Sweatshirt
- Burgundy Maplefields Polo Shirt
- White T-shirt/Shirt
- Black Trousers/Skirt
- Black School Shoes



You can purchase school uniform from the school office.

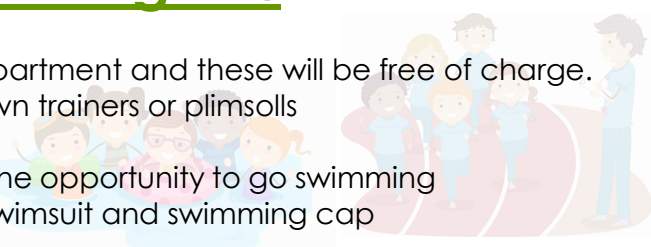
School Bags

Maplefields school bags will be provided to all new Primary students and will be provided free of charge

PE & Swimming Kits

PE Kit - this will be provided by the PE Department and these will be free of charge.
Please bring your own trainers or plimsolls

All Primary students will have the opportunity to go swimming
Please provide a towel, swimsuit and swimming cap



School Dinners

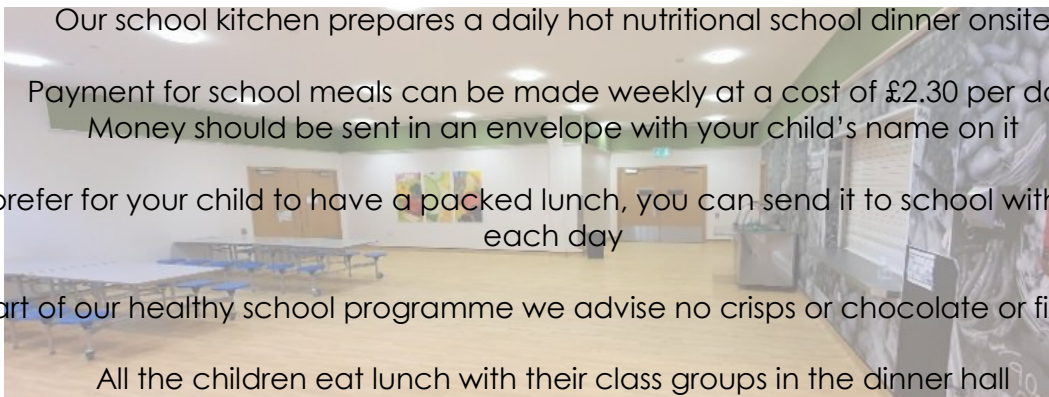
Our school kitchen prepares a daily hot nutritional school dinner onsite

Payment for school meals can be made weekly at a cost of £2.30 per day
Money should be sent in an envelope with your child's name on it

If you prefer for your child to have a packed lunch, you can send it to school with your child each day

As part of our healthy school programme we advise no crisps or chocolate or fizzy drinks

All the children eat lunch with their class groups in the dinner hall



We are a nut free school and foods that contain nuts must not be sent in to school for the safety of students with food allergies



Free School Meals

All Students must pay for their meals unless they are eligible for Free School Meals

Whatever your child is in, it is essential you apply for Free School Meals if eligible. For each student eligible, Maplefields receives "Pupil Premium" funding which goes directly towards supporting those children through additional support in school, funding for clubs and much more

You can apply online via Northamptonshire County Council



Parent Involvement

At Maplefields we encourage parents and carers to actively support the school in helping to make the children's learning experience as beneficial as possible.
There are many ways you can become involved at Maplefields:

Parent/Carer Workshops:

There are a wide range of workshops taking place throughout the year and the Family Support



Home School Diary

Use this book to write notes to class teachers and to receive notes and messages from school

Student Awards and Achievements

Every Friday, Maplefields have a celebration assembly where students are recognised for their good work that week

Throughout the school year, we also run various reward schemes for different groups of students



School Council

All school students have the opportunity to become responsible school council members. Each year the School Council is elected by their peers. The school councils support school development and promotes the voice of student

Therapy

At Maplefields we have a range of therapies available to support our staff and students in accessing the curriculum.

These include: Speech & Language, Music Therapy, Occupational Therapy and Psychology

The therapists hold regular coffee mornings, discussions and workshops with parents. The majority of the therapists' work is to support class staff and their work with children. Individual and group sessions are also part of our provision

Attachment Aware and Trauma Informed Practice

At Maplefields we follow the attachment aware principles as a whole school to support co-regulation, positive social engagement and reflective practice. Through using this process, long term outcomes are attainable for our students

Our attachment aware practice is threaded throughout our school through the interactions with our students, the environment and the language we use



School Transport

Most Students at Maplefields are transported to school via school transport

This is organised by the SEND Transport
www.northamptonshire.gov.uk/travelcoordinationunit

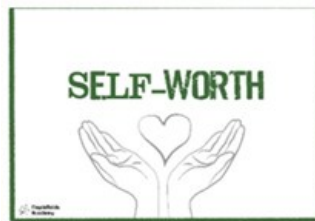
Please be aware that transport is not guaranteed and that the Local Authority has a very strict transport policy. Please contact your special needs officer for more information.

Whether your child comes to school with you by walking, taking a taxi/bus or being driven, it is very important that Students arrive to school on time and are collected at the correct school finishing time

School Trips

Our Curriculum Drivers in support of trips at Maplefields are:

Communication, Healthy Relationships, Independence and a Positive Self-Worth



Holiday Clubs

During the Summer Holidays, clubs may be available for students to take part in trips, activities and special projects

Residential Trips

Students have the opportunity to attend residential trips. Emphasis is placed on raising levels of communication, building positive relationships, developing independence and a positive self-worth.

Local Day Trips

Often we take our Students outside of School into the nearby surrounding local area for social development and experiences
They may go horse riding and to Forest School. It can also include a visit to the shops, a walk to the park or visit local attractions
Parents/Carers sign a consent form at the start of the term granting permission for their child to attend

Day Trips

Throughout the year, each class will have a number of day outings
These trips mainly support topics studied in lessons. Parents/Carers are informed well in advance and will be asked to give written permission for each trip. Children are supervised at all times. A voluntary contribution towards the cost of the trip may be requested

During your child's time in Maplefields Academy they will have the opportunity to go on a Residential Trip. Our main targets for these Residential Trips are to develop communication skills, build healthy relationships, increase their independence skills and a positive self-worth

Maplefields Primary

We have four classes in our Primary provision:

GREEN

PURPLE

BLUE

RED

Ranging from Reception age to Year 6

We plan for learning through play and practical activities,
based on the Foundation Stage curriculum



In Primary we aim to give our students a firm foundation for learning,
developing confidence and independence skills in
a caring and supportive environment

There is a wide range of experience, knowledge and skills amongst the staff,
whose main aim is to nurture and develop their communication skills

They will establish clear routines, healthy relationships and encourage their potential

Maplefields Secondary

Our Secondary provision consists of two Year 7 classes which are based in the Primary area.

In the Main School, there are six classes ranging from Years 8-11 and two classes in our Nurture area, one for KS3 and one for KS4

Each class has a Teacher supported by Specialist Teaching Assistants

The School is spacious and well resourced. The facilities include: kitchen area, a learning lounge, Computer Room, Drama Studio, Science Room, DT Room, Art Room and Music Room. In the Secondary Sports Area, there is a Fitness Suite, a full size Sports Hall, full size Astro turf and a Rock Climbing Wall



In the Vocational area to support students with their learning pathway there is a Construction Room, Bistro and a Vehicle Workshop

We combine a concentration on basic skills teaching with a rich and varied wider curriculum which encourages students to take steps towards independence



We hope your child enjoys their time here with us at Maplefields

If you have any queries or would like to talk to a member of staff about anything regarding school, concerns or support, please get in touch and we will be happy to help



Maplefields Academy

A Specialist Social, Emotional & Mental Health Academy

**Tower Hill Road
Corby, Northants
NN18 0TH**

Telephone: 01536 424090

Email: office@maplefields.northants.sch.uk

Website: www.maplefieldsacademy.co.uk