

Maplefields Academy Knowledge Organiser

Art & Design— Still Life

Key Vocabulary:

Line, shape, form (3D form)

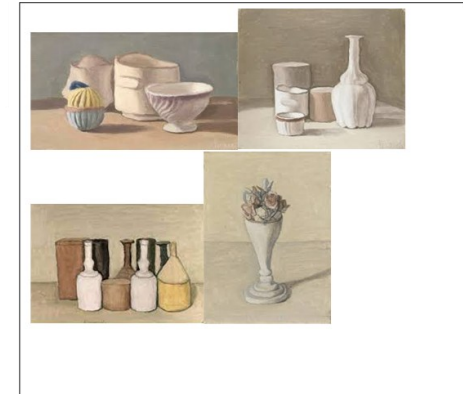
Pencil pressure

composition, triangular, tone, tonal value, shade, contour line, perspective lines

Blend, tertiary, natural colours

GIORGIO MORANDI Timeline

- 1890 Born
- 1907 – 1913 Attended the Art Academy
- 1915 Went to war
- 1914 – 1929 Taught Art in school
- 1943 – 1953 Created his most famous work
- 1964 Died



1890 1907 - 1913 1915 1914-1929 1940 1950 1960 1964



Shape

Line is used to create an outline

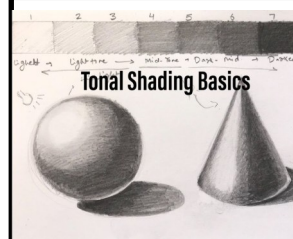


Form

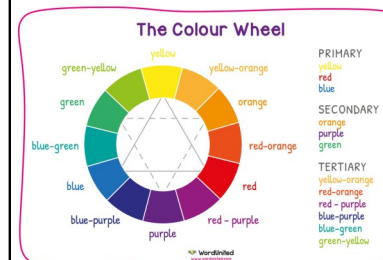
contour lines have been used to create the form

Sketch a still life composition
Apply light pencil pressure, erase unwanted lines.

You will use geometric shapes to plan your drawing (Cube, sphere, cylinder, pyramid)



Practice tonal shading, altering pencil pressure for darker and lighter tones. Tonal shade 2D shapes so they appear to be 3D forms



Paint a 12 section colour wheel

Mix neutral tones by adding light brown or grey to a hue colour. Paint your still life composition.