

Maplefields Academy Knowledge Organiser

Art & Design— Formal Elements

Key Vocabulary:

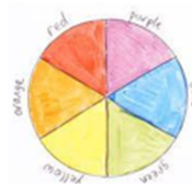
Line Primary, Secondary Colours Shapes
 Paper Cut-outs Abstract Pattern
 Actual Implied Texture
 Tonal shade

Paint and label a basic 6 section colour wheel

Begin by preparing your table.
 The 3 primary coloured paints
 A water container
 A suitable sized paint brush
 A piece of tissue
 A mixing pallet
 A colour wheel template



- Begin by labelling your colour wheel around the outside
- Paint the primary colours first
- **Make sure you wash and dry your brush**
- Mix the secondary colours and paint



Draw shapes and paint / colour



Window Art



The Formal Elements

Line is the path left by moving a point. For example, a pencil, or a brush dipped in paint. A line can take many forms.

Colour Red, yellow & blue are primary colours which means they can't be mixed by using other colours. In theory, all other colours can be made from these 3 colours.

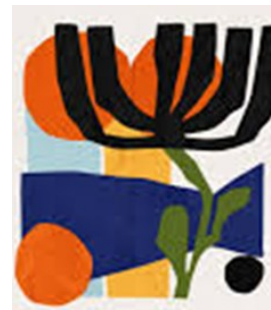
Pattern is a design that is created by repeating lines, shapes, tones & colours. A design which keeps occurring is called a motif.

Texture Describes the surface quality of something. Actual texture really exists. Visual texture is created using marks to represent texture.

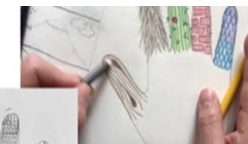
Tone refers to the lightness or darkness of something. Tone and shading can be used to make 2D look 3D = form.

Shape A shape is an area enclosed by a line. Shapes can be either geometric like a circle, square or triangle or irregular.

Create a collage



Textured Hand



Tessellate Pattern

To create a repeat image